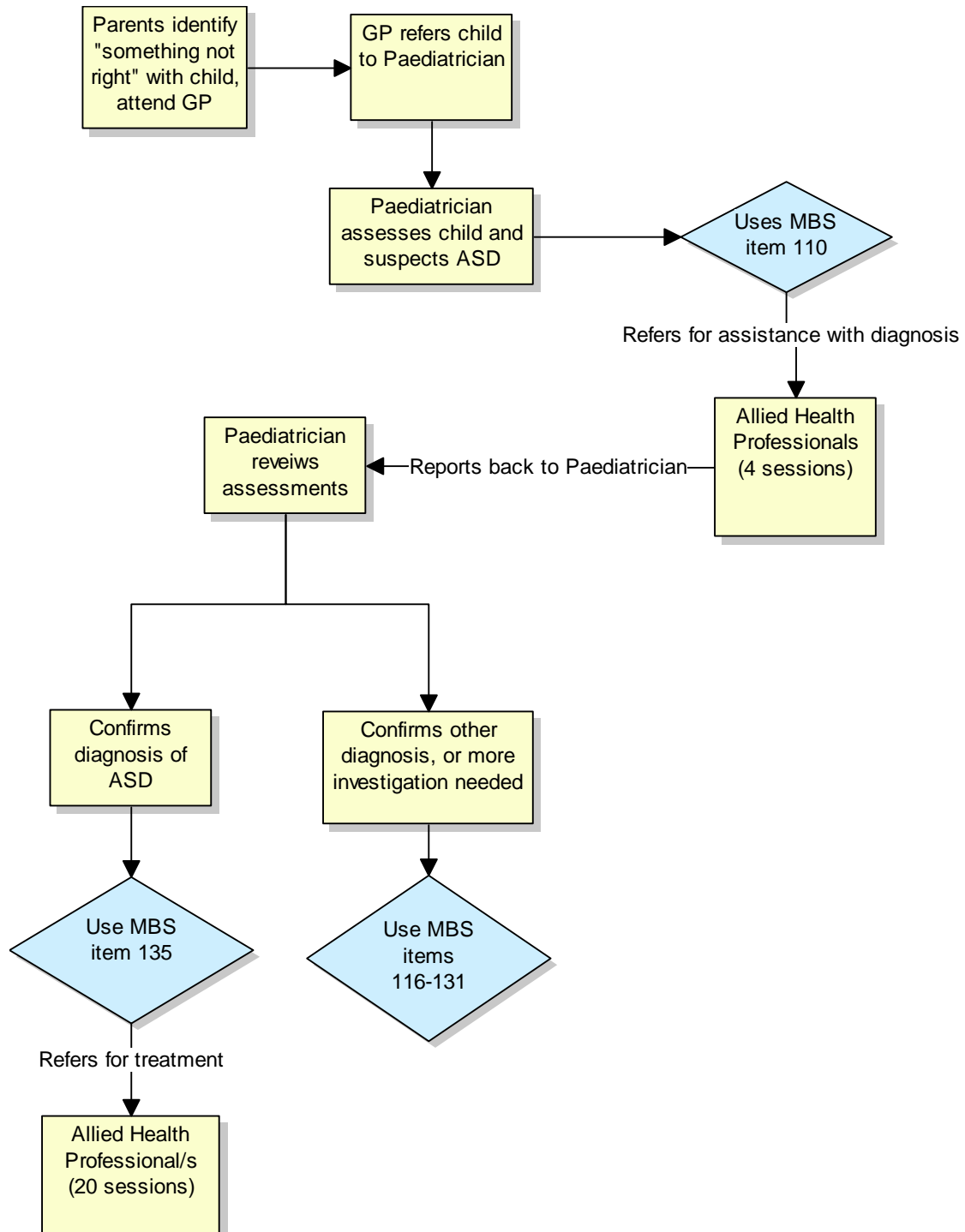


Pathway through MBS items for a child who does not have a previous diagnosis of ASD



Note:

- In this flowchart, the psychiatrist can take the paediatrician role, with different item numbers
- Paediatrician doesn't have to refer child for allied health assessments to make a diagnosis of ASD
- Paediatrician develops a treatment plan and determines who child will be referred to for allied health treatment sessions